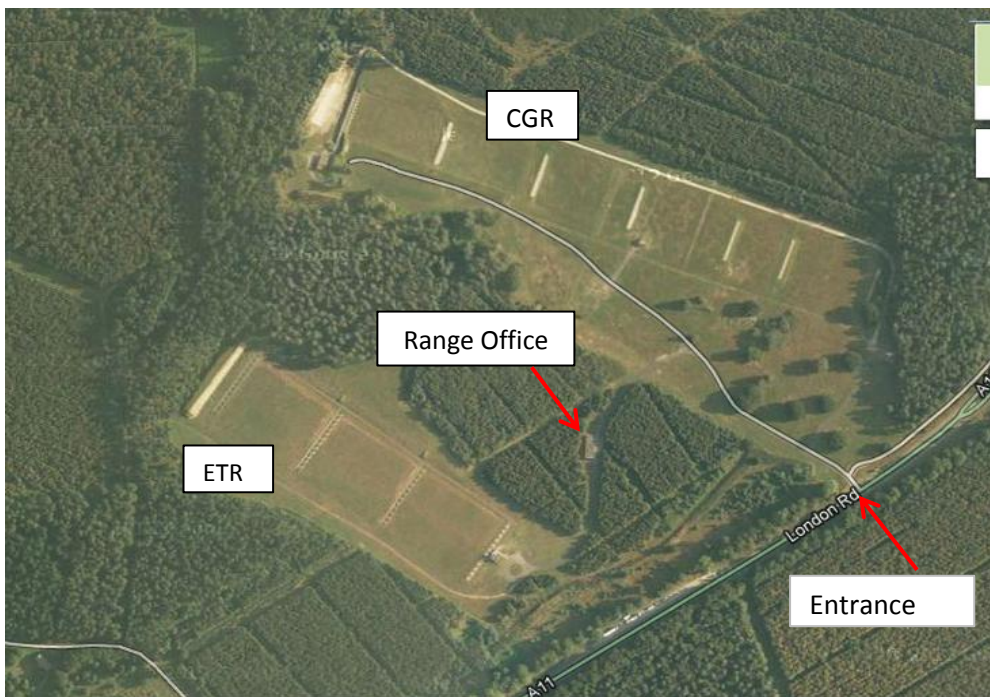


Thetford CGR and ETR ranges.



Travelling NE along the A11, the entrance to the range is on the left between the end of the layby and the roundabout



CGR Details.

Location: TL 848818

Permitted weapon Calibre: Rifles up to and including 7.62mm cal. Max MV 1000m/s, ME 4500J

No HME weapons permitted (22-250, etc) anyone claiming to be using downloaded ammo will have their gun and ammo chronoed.

The range has 12 lanes with firing points from 100-400m & 600yds

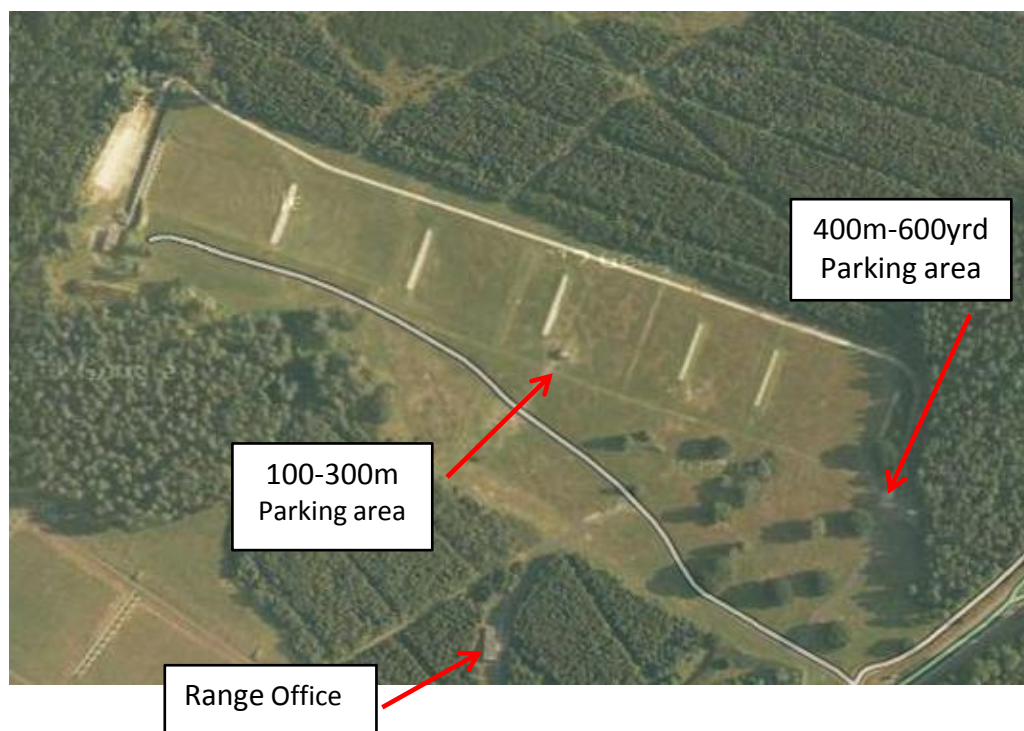
Tracer Ammo NOT permitted.

An Air Sentry will be required when using the CGR range. They are to be on the firing point and be able to easily communicate with the RCO. They are to inform the RCO if any aircraft are heard or spotted near the range.

Shooting from 0900 to 1300, please arrive by 0830 to help set up and for RCO briefing for a prompt 9am start.

Setup similar to Barton Rd, half the group shooting, half the group in the butts doing targets.

Toilets at the Range Office.



ETR Details.

Location: TL 844816

Permitted weapon Calibre: Rifles up to and including 7.62mm cal. Max MV 1000m/s, ME 4500J

No HME weapons permitted (22-250, etc) anyone claiming to be using downloaded ammo will have their gun and ammo chronoed.

The EGR range is a standard 12 lane 300m Electronic Target Range, with one main firing point for each lane.

Tracer Ammo NOT permitted.

An Air Sentry will be required when using the CGR range. They are to be on the firing point and be able to easily communicate with the RCO. They are to inform the RCO if any aircraft are heard or spotted near the range.

Shooting from 0900 to 1300, please arrive by 0830 to help set up and for RCO briefing for a prompt 9am start.

Toilets at the Range Office.

